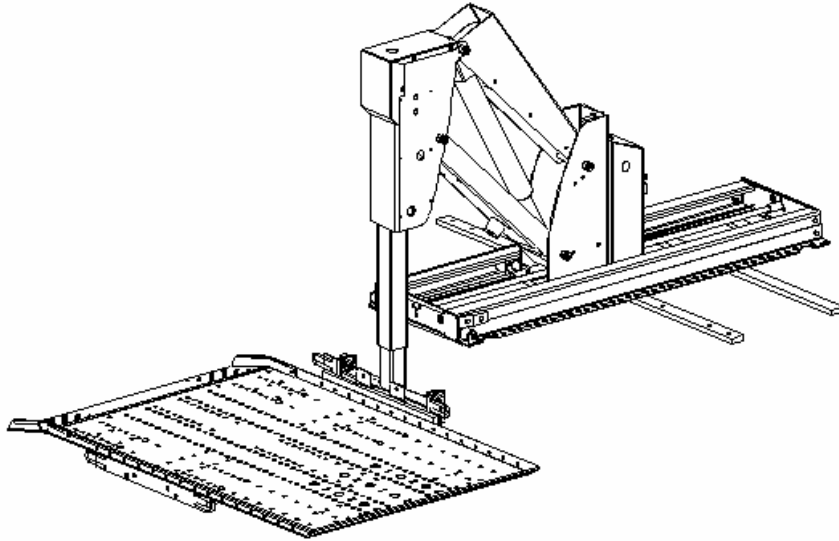




**TRACKER XT
INSTALLATION MANUAL
& WARRANTY**



These instructions are provided to assist you in the installation of the TRACKER XT. If you require further assistance, our trained staff is ready to provide you with quick, efficient service. Call our toll-free number:

1-800-755-2856

Monday thru Friday, 8:00 AM – 6:00 PM (Except holidays) E.S.T
Before calling please have your customer number or order number available.

© 2003 Freedom Lift Corporation

TABLE OF CONTENTS

<u>SECTION TITLE</u>	<u>PAGE #</u>
REQUIREMENTS AND CONSIDERATIONS BEFORE INSTALLATION	3
SAFETY FIRST	4
TOOLS AND SUPPLIES REQUIRED FOR INSTALLATION	5
TRACKER XT INSTALLATION STEPS	5
STEP 1: ELECTRICAL WIRING.....	5
STEP 2: INSTALLING THE MOUNTING BARS	8
Or STEP 2: MOUNTING THE TRACKER XT DIRECTLY TO THE VEHICLE'S FLOOR	9
STEP 3: POSITION THE LIFT ASSEMBLY ON THE MOUNTING BARS	11
STEP 4: ATTACH LEVELING FEET TO THE LIFT ASSEMBLY	11
STEP 5: POSITION THE TROLLEY ASSEMBLY AND BOLT IT DOWN.....	12
STEP 6 CONNECT POWER TO THE LIFT.....	14
STEP 7: MOUNTING THE PLATFORM TO THE LIFT ASSEMBLY	14
STEP 8: CHECK CLEARANCES WITHOUT LOAD.....	15
STEP 9: ADJUST PLATFORM ANGLE TO SUIT LOAD – Power Chair or Scooter.....	15
STEP 10: ADJUSTING THE VERTICAL – HORIZONTAL TRANSITION	16
STEP 11: CONFIRMING HOME POSITION AND LOCKING PIN ALIGNMENT	16
STEP 12: INSTALLING THE STRAPS FOR THE CUSTOMER'S POWER CHAIR/SCOOTER.....	17
STEP 13a Installing Hold-down Straps in the Center Positions	17
STEP 13b Installing Hold-down Straps off to the side in the Loop Positions	18
STEP 14: OPTIONAL: DOCK-N-LOCK INSTALLATION	19
FUSE FOR RF REMOTE CONTROL CIRCUIT	20
TRAINING THE END-USER	20
MAINTAINING THE LIFT	20
TROUBLESHOOTING CHART	21
ELECTRONIC CONTROL BOX WIRING DIAGRAM	22
Warranty	23
What and Who is Covered and for How Long	23
Limitations.....	23
Other Conditions/Disclaimer	23
What the Customer Must Do	23
Warranty registration Information	23

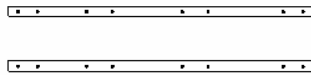
FOR YOUR RECORDS

SALESPERSON _____
TELEPHONE _____
PURCHASE DATE _____ LIFT SERIAL # _____
CUSTOMER # _____ ORDER # _____

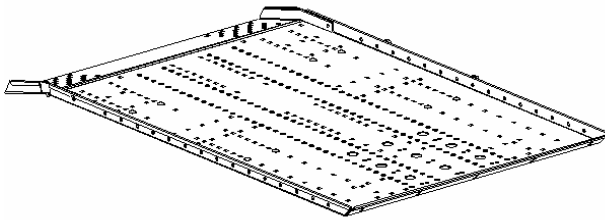
REQUIREMENTS AND CONSIDERATIONS BEFORE INSTALLATION

The Freedom Lift TRACKER XT™ is designed to work with a variety of vehicles. Since each vehicle is different, the success of each installation is largely determined by the care and forethought of the installer. Before beginning any installation, please read through this manual to familiarize yourself with the installation procedure. This will save you time and result in a quality installation.

Before beginning installation, open the boxes and check that the contents match those on the packing list.

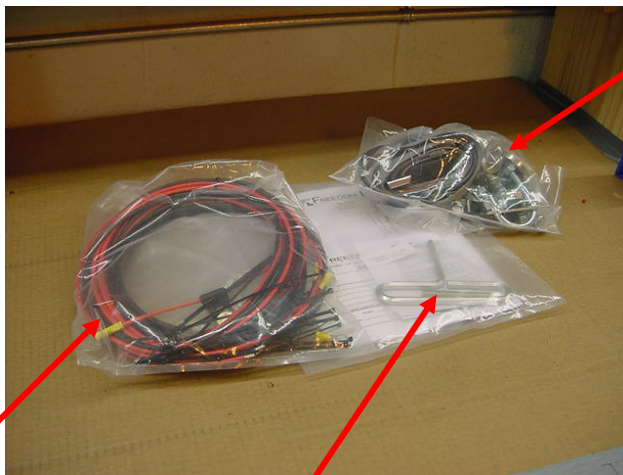


MOUNTING BARS



PLATFORM ASSEMBLY

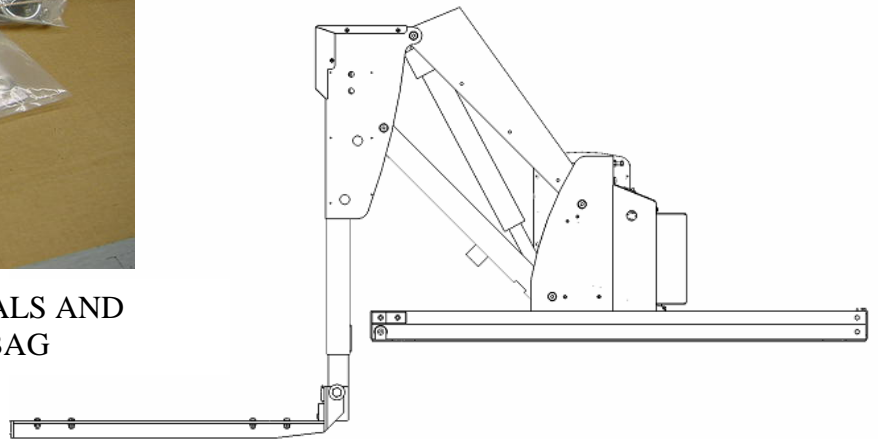
ITEM	DESCRIPTION
1	TROLLEY ASSEMBLY
2	PLATFORM ASSEMBLY
3	MOUNTING BARS
4	HAND REMOTES (In the manuals and tool bag)
5	CONTROL PENDANT (NOT SHOWN MOUNTED ON THE TRACKER)
6	HARDWARE BAG
7	HARDWIRED BAG
8	MANUALS AND TOOL BAG



HARDWIRED BAG

MANUALS AND TOOL BAG

HARDWARE BAG



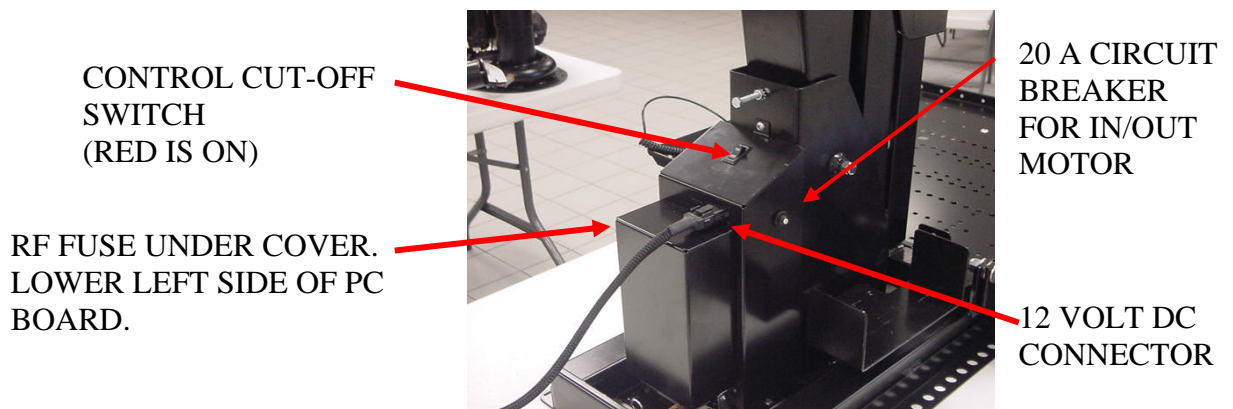
TROLLEY ASSEMBLY

SAFETY FIRST

1. **The Power Chair or Scooter must have the brake engaged and be securely attached to the Lift during transport.** The straps, when properly adjusted and maintained, are intended to constrain the power chair or scooter. The straps should be checked to make certain they are in good condition before each use.

WARNING: FAILURE TO ENGAGE THE BRAKE AND SECURELY STRAP THE POWER CHAIR/SCOOTER TO THE LIFT DURING TRANSPORT COULD RESULT IN SERIOUS PERSONAL INJURY OR DAMAGE TO THE LIFT, THE POWER CHAIR, AND VEHICLES.

2. After the Power Chair/Scooter has been lifted into the vehicle, turn the control cut-off switch off. This will prevent inadvertent operation of the Lift by remote control and/or hand held pendant. Remember for the control cut-off switch – **“RED IS ON.”**



ALWAYS PUSH THE POWER CUT-OFF SWITCH TO THE OFF POSITION WHEN NOT OPERATING THE LIFT.

3. The TRACKER XT™ is equipped with a 30 AMP self-resetting circuit breaker on the wire harness. See “Wiring the Lift” on page 5 for more details about the circuit breaker. The circuit breaker is located in the vehicle near the battery end of the power wire harness. The circuit breaker protects the Lift against excessive current draw. The circuit breaker is self-resetting. If the circuit breaker continues to trip, inspect the wiring to make certain it is not the problem, see page 8. If the wiring appears good, call the Freedom Lift service number on the title page of this manual.

WARNING: DO NOT ATTEMPT TO BYPASS THE CIRCUIT BREAKER AS THIS MAY CAUSE SERIOUS DAMAGE TO THE LIFT AND/OR CAUSE A FIRE.

4. The TRACKER XT™ Lift has a maximum weight lifting limit of 350 pounds.

WARNING: DO NOT EXCEED THE MAXIMUM CAPACITY OF LIFT OR DAMAGE TO THE LIFT AND/OR SERIOUS INJURIES MAY OCCUR.

Note: Most power chairs and scooters do not exceed 350 pounds unless larger batteries (longer range batteries greater than 33 amps each) are installed. If you have any questions on the weight of the scooter or power chair, please contact the manufacturer.

5. The TRACKER XT™ Lift has been designed to lift power chairs and scooters. It has not been designed or intended to lift any other object. Lifting people or objects other than power chairs may be dangerous.
6. Keep the areas underneath of the Lift clear at all times (i.e. objects, pets, people, etc.).

TOOLS AND SUPPLIES REQUIRED FOR INSTALLATION

<input type="checkbox"/> DRILL	<input type="checkbox"/> ASSORTED DRILL BITS
<input type="checkbox"/> SMALL FLASHLIGHT	<input type="checkbox"/> ELECTRICAL TAPE
<input type="checkbox"/> ASSORTED WRENCHES AND SOCKETS (5/32", 3/16", 1/4", 7/16", 9/16" and 3/4")	<input type="checkbox"/> 5/16" ALLEN WRENCHES
<input type="checkbox"/> PHILLIPS HEAD SCREWDRIVERS, #1 & #2	<input type="checkbox"/> STANDARD SCREWDRIVER
<input type="checkbox"/> SILICON CAULK (RTV) (optional)	<input type="checkbox"/> PORTABLE VACUUM
	<input type="checkbox"/> TAPE MEASURE

TRACKER XT INSTALLATION STEPS

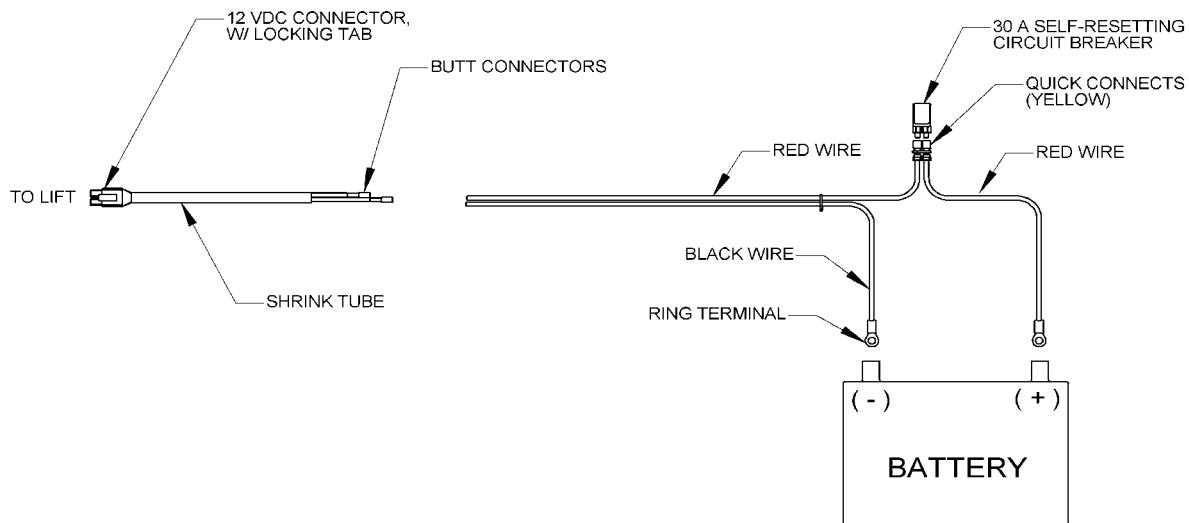
STEP 1: ELECTRICAL WIRING

Wiring the Lift to the motor Vehicles battery involves running the supplied wire harness from the battery's terminals, through the transporting vehicle's firewall and back to the Lift. It is usually possible to keep the wire hidden from sight by tucking it under the edge of sill plates or carpeting. Protect the wire from chaffing against rough metal edges or getting crushed by moving parts or attachments.

If the harness is not long enough you may add additional 10-gauge Marine wire (minimum gauge) using butt connectors. Protect this connection from moisture with either heat shrink tubing and/or electrical tape.

THE WIRING KIT INCLUDES

1. 10 gauge Marine wire one red, 24'-6" long and one black, 25' long.
2. A 30 AMP auto-resetting circuit breaker in a fuse holder. A ring terminal on one end and Butt connector on the other end.
3. 1 ring terminal
4. 10 small tie-wraps and 10 large tie-wraps.
5. Pigtail adaptor (180ELE153)

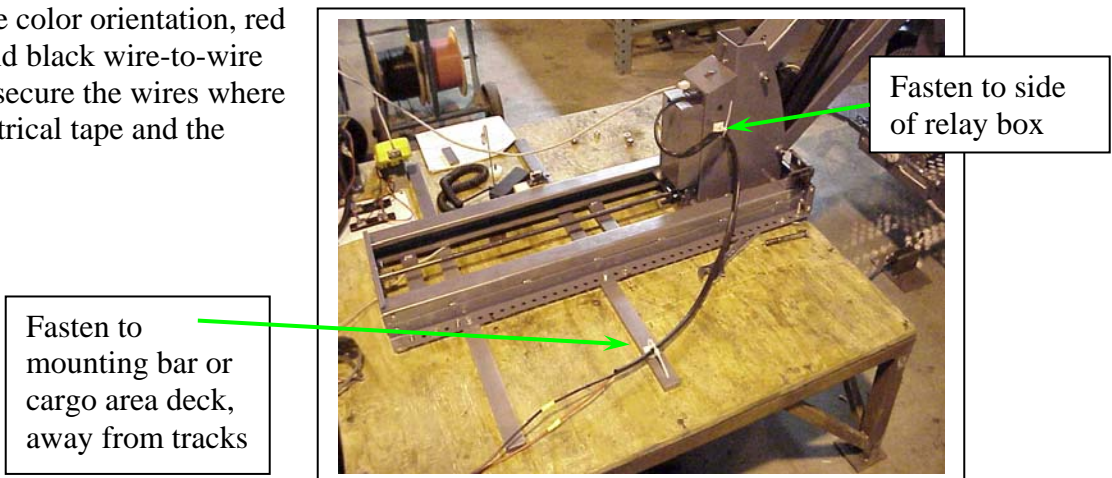


Routing of the Harness:

Starting at the vehicle's Battery

- a) Loosely tie the end of the wire harness with the circuit breaker close to the battery. Allow enough slack for the wires to reach the terminals.
- b) Remove the circuit breaker from the wire harness by pulling it straight out of the fuse holder.
- c) Assuming the battery is in the engine compartment, route the wires through the engine compartment to the firewall. Avoid moving parts such as carburetor linkages, steering parts, fans, belts, and pulleys. Also avoid hot parts such as exhaust manifolds and pipes. Secure the wires using plastic wire ties or electrical tape.
- d) Pass the wires through the vehicle's firewall into the passenger area. Usually, the wire can safely pass through an existing rubber grommet on the firewall. If one cannot be found then drilling is necessary. Before you drill a hole in the firewall, make sure to check for objects that might get pierced by the drill bit (heater core, wiring looms, vents, cabling, etc.). Wrap the section of wire running through the hole an inch on either side of the hole with electrical tape to protect it from chaffing. Seal the hole with silicon caulk. Route the cabling back to the Lift area, hiding the harness under carpet sills or under the carpets.
- e) When the wires are at the Lift area, strip the insulation off the ends of the wire (1/4" to 3/16") and crimp to the butt connectors on the pigtail adaptor (48 inch long 12 VDC connector harness).
- f) Use the wire ties and adhesive wire tie supports to fasten the pigtail adaptor to the side of the relay box cover and to one of the mounting bars, to keep the harness from falling in between the tracks

NOTE: The color orientation, red wire-to-wire red and black wire-to-wire black. Protect and secure the wires where possible using electrical tape and the supplied wire ties.



Final steps:

- Attach the black wire of the harness to the negative (-) battery terminal. Attach the red wire to the positive (+) battery terminal

WARNING:

DO NOT ATTACH THE GROUND WIRE TO THE VEHICLE'S FRAME. IT IS IMPORTANT THAT THE BLACK GROUND WIRE BE CONNECTED TO THE BATTERY'S NEGATIVE TERMINAL (-) AND NOT TO THE VEHICLE FRAME. FAILURE TO ESTABLISH A PROPER GROUND MAY CAUSE INTERMITTENT AND ERRATIC OPERATION OF YOUR LIFT, MAY CAUSE DAMAGE TO THE LIFT AND/OR VEHICLE ELECTRICAL, AND MAY INVALIDATE THE WARRANTY.

- When you have completed the Lift installation and are ready to power the Lift, make sure the main power switch is in the OFF position. Replace the circuit breaker in the fuse holder, located in the wire harness near the battery end.

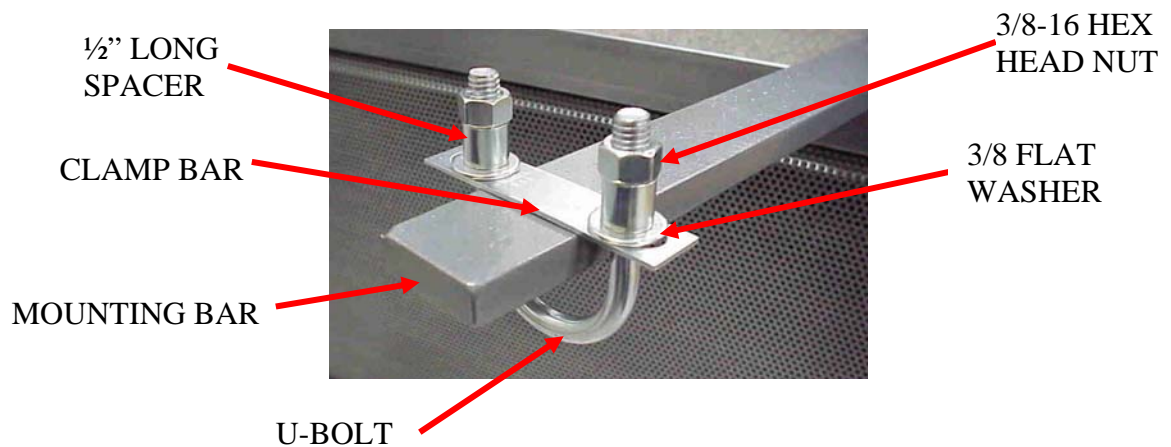
NOTE: Always turn the main power OFF when not operating the Lift. This will prevent inadvertent activation of the Lift during transportation.

STEP 2: INSTALLING THE MOUNTING BARS

The TRACKER XT rests on top of a pair of mounting bars, which together with the U-bolt brackets allow installation using the vehicle's existing seat attachment points.

To install the Mounting Bars:

- a.) Position the (2) MOUNTING BARS over the vehicle's rear seat attachment points.
- b.) Attach the (4) "U" BOLTS provided, around the seat attachment points and the MOUNTING BARS. Depending on the vehicle's seat hooks, you may need to add the 1/2" long tube spacers provided between the 3/8-16 Hex Nuts and the plate (see photo below), in order for the nuts to be on the U-bolt threads. Hand-tighten the bolts enough to hold them in place, but loose enough to slide the bars side to side for adjustment.
- c.) Center the threaded holes in the MOUNTING BARS with the sides of the cargo area to center the Lift.



Example: Mounting Bars Installed

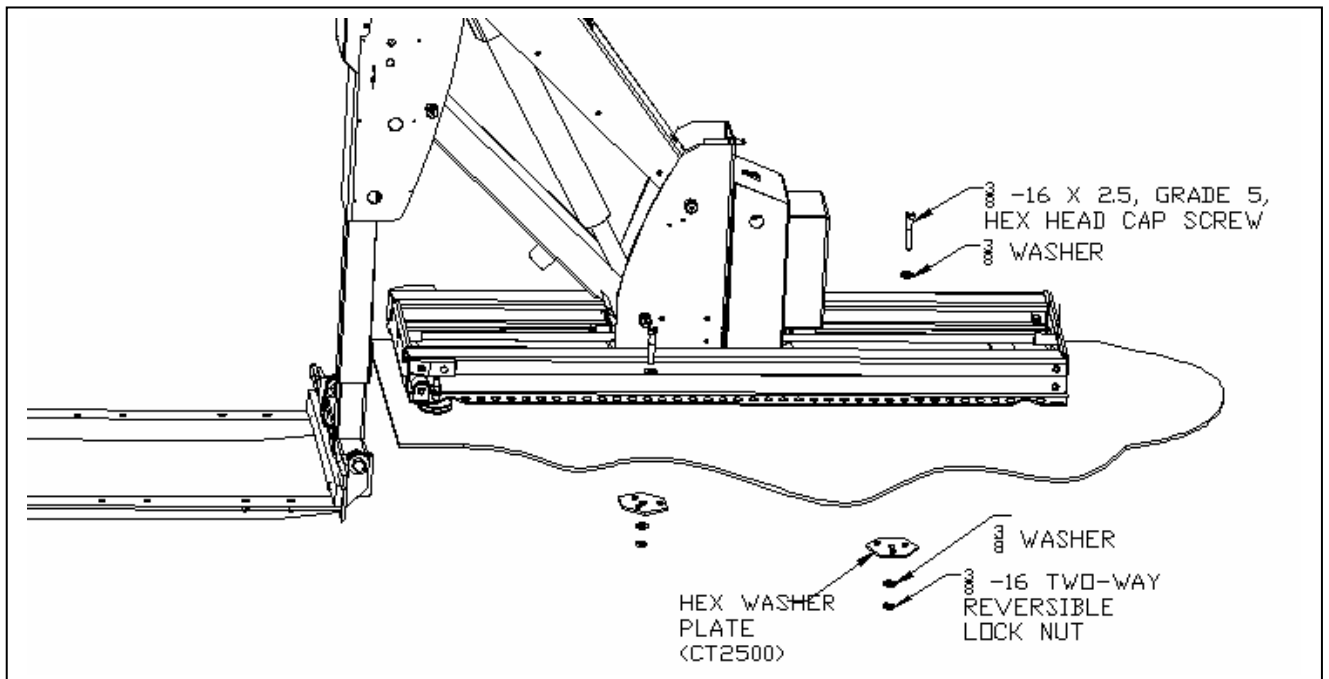
Or STEP 2: MOUNTING THE TRACKER XT DIRECTLY TO THE VEHICLE'S FLOOR

Alternatively, the TRACKER XT may be installed by bolting the Side Mounting Rails of the Trolley Assembly to the vehicle's floorboard if there is a suitable mounting surface and are no obstructions (fuel tank, brake lines, etc.)

WARNING:

CHECK FOR VEHICLE COMPONENTS UNDER THE CARPET AND FLOORBOARD BEFORE DRILLING ANY HOLES. CHECK THE AREA BENEATH THE VEHICLE IN THE INTENDED INSTALLATION LOCATION TO BE SURE YOU WILL NOT PIERCE OR CONTACT THE FUEL TANK, ELECTRICAL WIRING, BRAKE LINES, ETC. CHECK FOR RUST DAMAGE OR COLLISION REPAIR THAT MAY COMPROMISE THE VEHICLE'S STRUCTURAL INTEGRITY.

- a.) Fold back or remove the carpet in the area to expose the metal floorboard. The Lift Assembly must be mounted to a relatively flat surface. Small irregularities, such as stiffening channels, may be shimmed with washers when the Lift Assembly is bolted down. On most installations, the carpet can be folded back into place and trimmed around the Side Mounting Rails so that it will be captured neatly against the Lift Assembly. Use your best judgment and strive for a neat installation.
- b.) Place the Lift Assembly in the desired position on the floor of the vehicle's cargo area and mark the four hole locations with a 3/8" center punch. Remove the Trolley Assembly and drill the four holes for the mounting bolts using a 3/8" drill bit. **BE VERY CAREFUL NOT TO DAMAGE ANYTHING ON THE UNDERSIDE OF THE VEHICLE WHEN THE DRILL BIT PUNCHES THROUGH THE METAL FLOOR.**

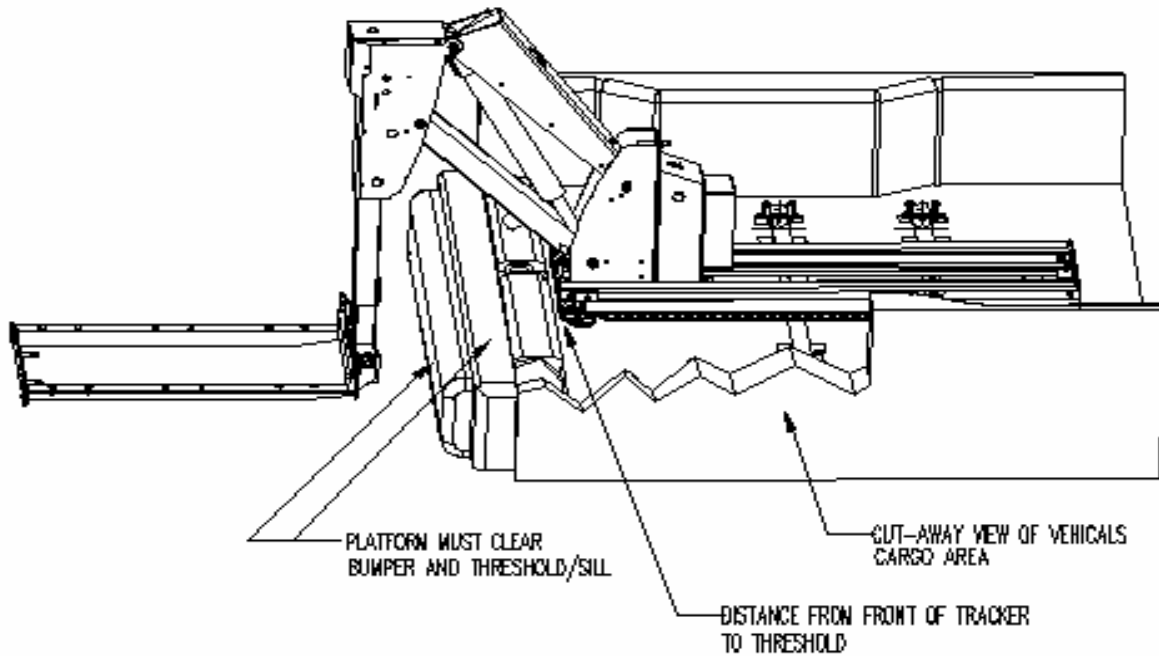


- c.) Install the Lift Assembly with the 3/8" X 2.5" Bolts, 3/8" Flat Washers, Hex Washer Plates and 3/8" Locking Nuts provided. If shims are necessary (to compensate for irregularities in the trunk floor or to level the Trolley Assembly) use additional 3/8" ID Flat Washers (not included). Attach a 3/8" Washer and a 3/8" Self-Locking Nut to the Hex Washer Plate and Bolt from the underside of the vehicle and tighten securely. At this time, the washers and nuts that mate to the underside of the vehicle should be sealed with silicone sealant to prevent moisture from entering the holes and rusting the vehicle's floor or Lift Assembly.

CAUTION: FAILURE TO SECURELY FASTEN ALL THE BOLTS MAY RESULT IN DAMAGE TO THE LIFT OR VEHICLE'S FLOOR. THIS CONDITION MAY CAUSE THE UNIT TO FAIL UNDER LOAD, THUS RISKING PERSONAL INJURY TO THE OPERATOR AND DAMAGE TO THE POWER CHAIR/SCOOTER AND/OR TO THE VEHICLE.

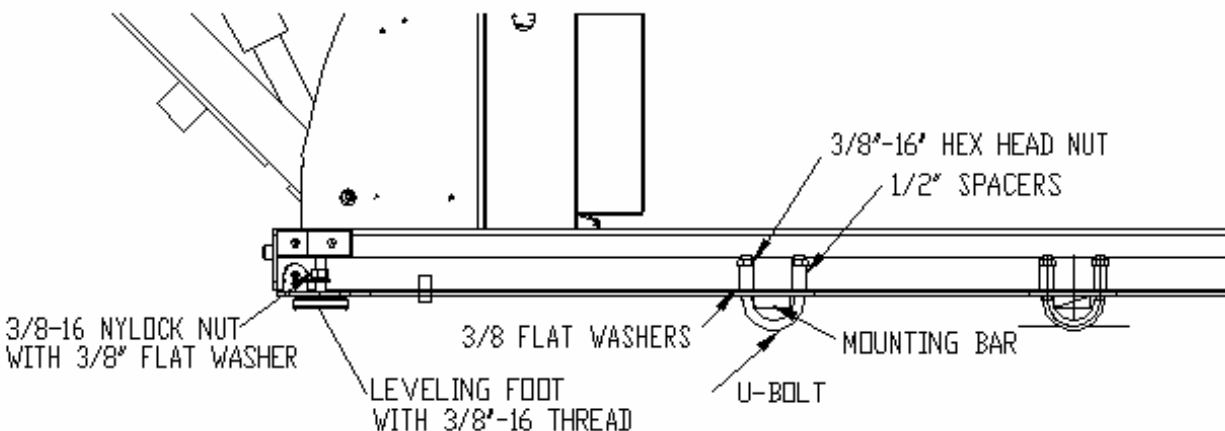
STEP 3: POSITION THE LIFT ASSEMBLY ON THE MOUNTING BARS

- Place the Lift assembly into the vehicle, laying it on top of the mounting bars as shown.

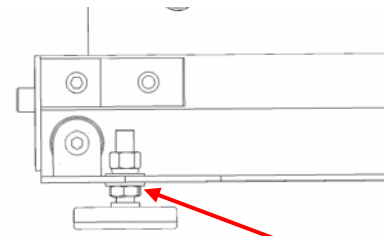


STEP 4: ATTACH LEVELING FEET TO THE LIFT ASSEMBLY

- a.) Place the adjusting feet (found in the hardware bag) in the holes of the SIDE MOUNTING RAILS, near the front of the TRACKER XT.
- b.) If the floor of the vehicle is level all the way, insert the feet with a 3/8 washer on each directly through the mounting rail as shown in the figure below. Secure the mounting feet with a 3/8 washers and Nylock nut on top.



c.) If you need to elevate the feet in order to level the trolley assembly, put a 3/8-16 hex jam nut and 3/8 washer onto the leveling foot first, then insert the threaded portion of the foot through the side mounting rail, as shown in the figure below.



3/8-16 HEX JAM NUT
& 3/8" FLAT WASHER

d.) Turn the additional 3/8-16 jam nut & nylock nut to adjust the height of each leveling foot. Adjust the height of the feet so that the weight of the Lift Assembly is evenly distributed on both of the mounting bars and leveling feet.

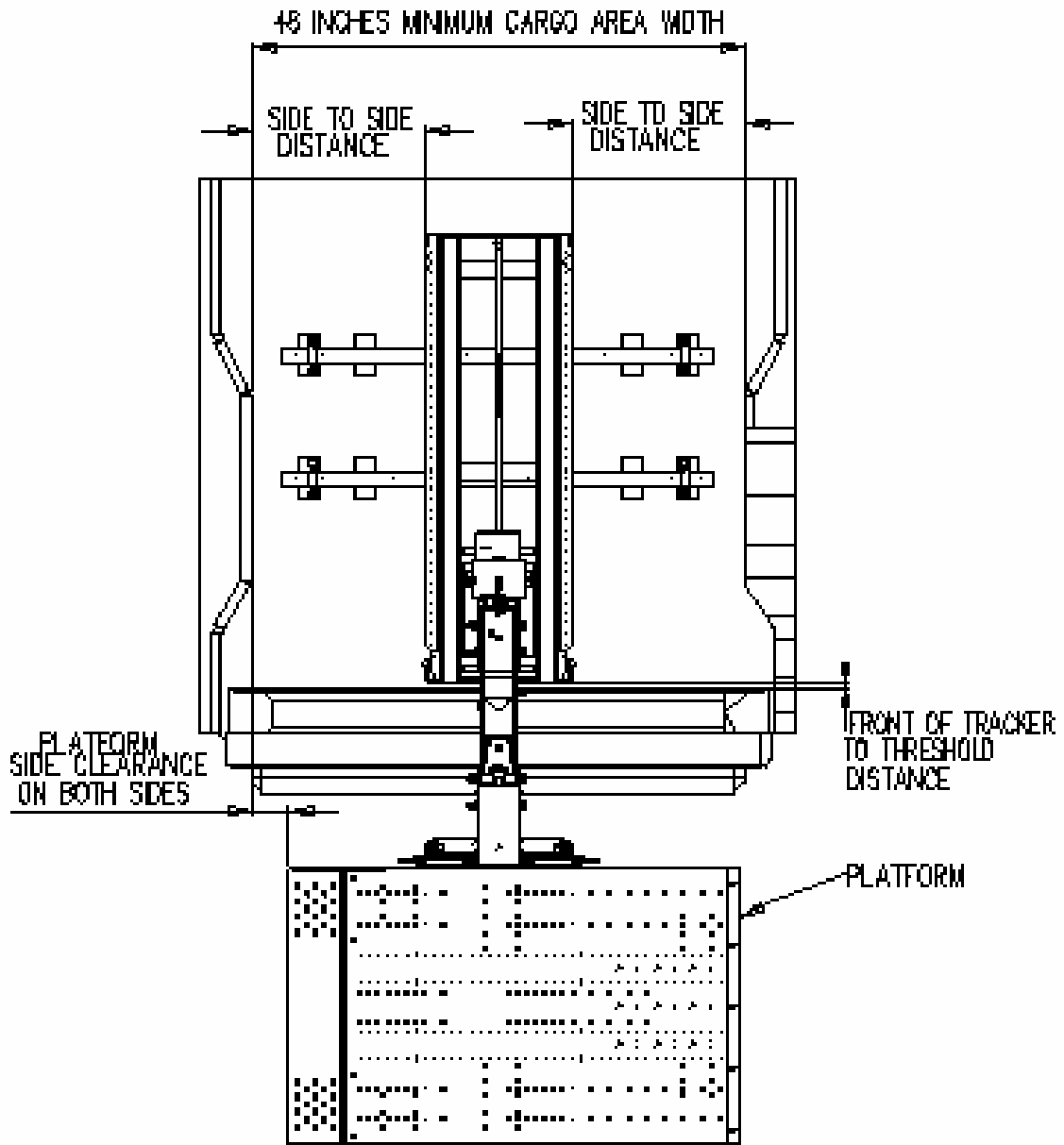
e.) Next- set the final position of the Lift Assembly in the cargo area and tighten down all of the nuts and bolts.

STEP 5: POSITION THE TROLLEY ASSEMBLY AND BOLT IT DOWN

- a.) Align the front of the Lift Assembly as far rearward in the opening of the cargo area as possible. This is important so that the TRACKER XT PLATFORM ASSEMBLY will clear the vehicle's bumper when operating.
- b.) Slide the Lift assembly on the mounting bars and adjust its position, aligning the holes in the Side mounting rails with the holes in the mounting bars. Check the distance from the side mounting rails of the trolley assembly to the sides of the cargo area, to make sure the trolley assembly is centered. To adjust the side-to-side distance, loosen the 3/8 nuts on the U-bolts and slide the trolley assembly & mounting bars to one side or the other.
- c.) Secure the side mounting rails to the mounting bars using the (4) 3/8-16 x 5/8" bolt; hand-tighten only at this point.
- d.) Do one final check of the side-to-side alignment and distance to the threshold/sill, adjusting if needed, and then tighten down all of the hex nuts on the U-bolts, and the 3/8 bolts on the mounting bars.

See diagram on sheet 13 for reference.

Reference diagram for alignment and clearance points for the Tracker XT.



STEP 6 CONNECT POWER TO THE LIFT

(See step 1)

- Connect the power to the Lift Assembly:
Plug the 12 VDC connector w/locking tab from the hard-wired connection, into the relay box on the Lift. Make sure the Lift's control cut-off switch is turned on before operating the Lift; you will see the RED portion of the switch when it is On.

. ALWAYS PUSH THE CONTROL CUT-OFF SWITCH TO THE OFF POSITION WHEN NOT OPERATING THE LIFT.

LIFT CUT-OFF SWITCH
Red is ON

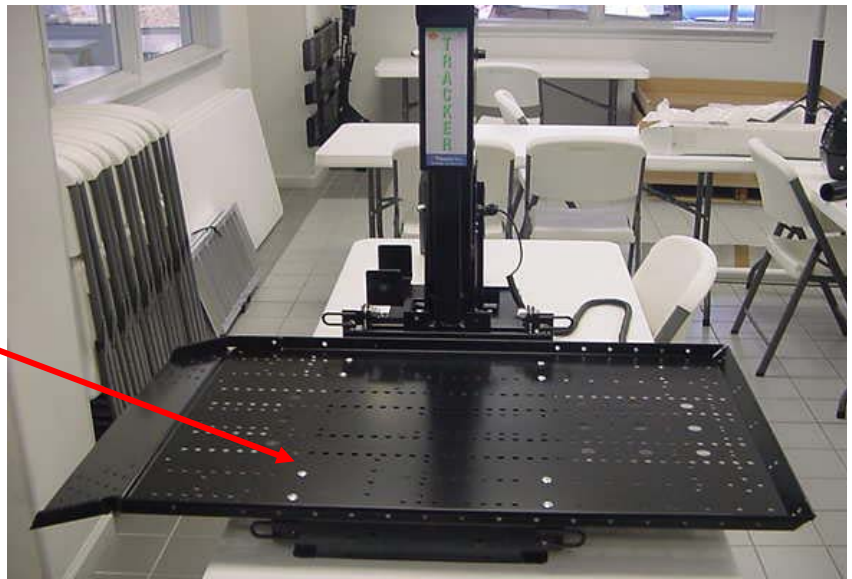
12 VDC
CONNECTOR



STEP 7: MOUNTING THE PLATFORM TO THE LIFT ASSEMBLY

- a.) Using the pendant to control the Lift, press “OUT” to move the Lift out & down to place the platform onto the Deck Frame Weldment
- b.) From the top install (8) 1/4-20 X 3/4” long Carriage bolts. Place them as shown. Be sure to go thru the Platform and the Deck Frame Weldment.
- c.) On the underside use a 1/4 Flat washer and a 1/4-20 Nylock nut.

8 Places



STEP 8: CHECK CLEARANCES WITHOUT LOAD

(See diagram on sheet 13 for reference.)

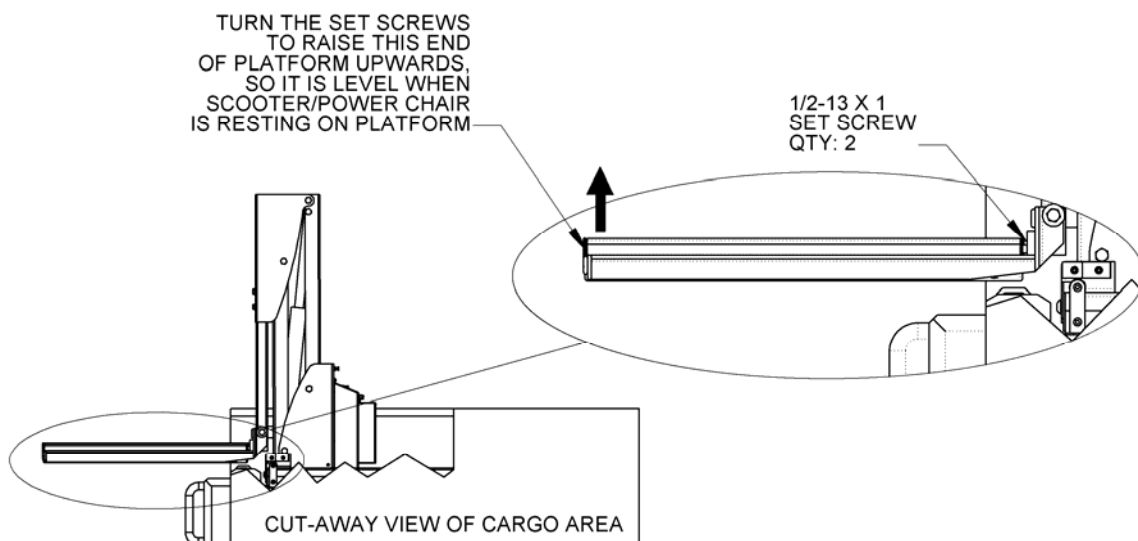
- Operate the TRACKER XT without a load and check the clearance of the platform over the bumper and threshold of the vehicle.
- Check the side-to-side clearances. To adjust the side-to-side distance, loosen the 3/8 nuts on the U-bolts and slide the Lift assembly & mounting bars to one side or the other.

STEP 9: ADJUST PLATFORM ANGLE TO SUIT LOAD – Power Chair or Scooter

The Platform angle has been preset at the factory; however, if you need to adjust the angle due to the customer's Power Chair/Scooter weight distribution, follow the process below.

You will need a 1/4" socket wrench to adjust the setscrews. Adjust the platform so that it is level while the customer's power chair/scooter is on it.

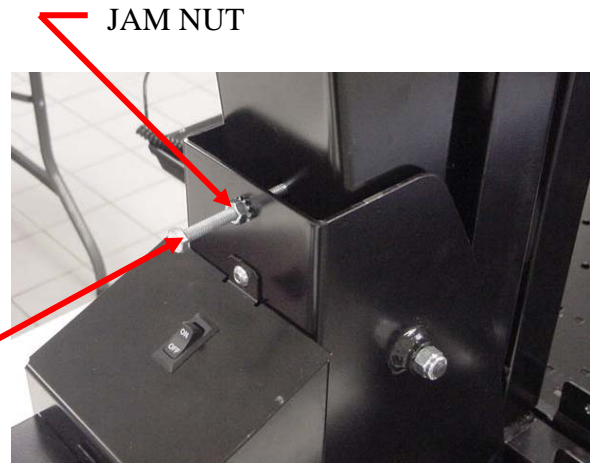
NOTE: When adjusting Platform level, the Platform alignment pins at the edge of the Platform must enter the holes on the Trolley frame with and without the power Chair/Scooter loaded. (See step 11b below)



STEP 10: ADJUSTING THE VERTICAL – HORIZONTAL TRANSITION

The relay circuit in the TRACKER XT is designed to end lifting and begin horizontal travel into the vehicle when the limit switch in the back boom weldment is contacted. The TRACKER XT is shipped with a factory setting for this limit switch. Depending on the weight of the power chair/scooter you may need to adjust the point where the Lift ends, especially if the load being carried is near the weight limit of 350 pounds.

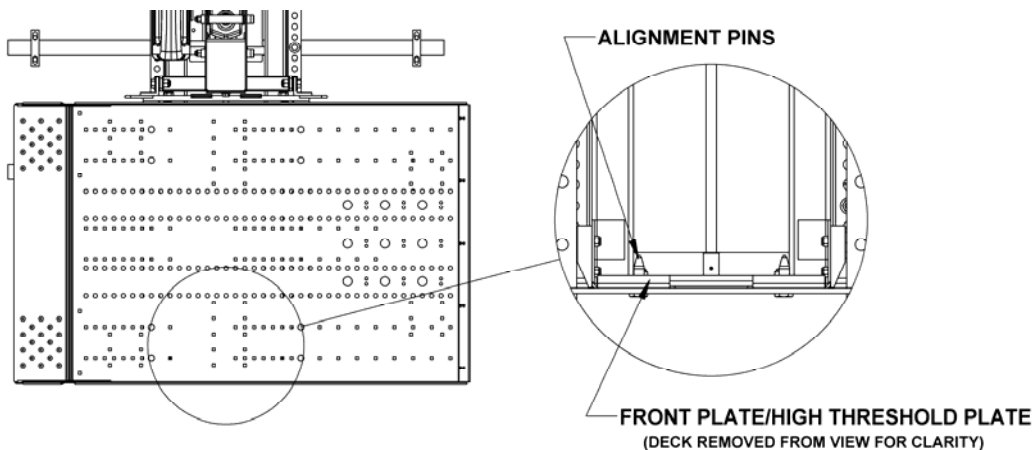
CONTACT SCREW



To adjust, loosen the jam nut on the screw, and turn the contact screw inward to increase the upward Lift, OR outward to reduce the upward Lift.

STEP 11: CONFIRMING HOME POSITION AND LOCKING PIN ALIGNMENT

- a.) The TRACKER XT is in its home position when the horizontal motion is completed. The movement stops when the stop rod contacts the back end of the trolley assembly, and activates a limit switch.
- b.) When the TRACKER XT is in its home position, it is important that the alignment pins are captured in the holes in the front plate. (See figure below)



If the pins are not captured in the holes, adjust the angle of the platform (Step 9) Make certain you adjust the angle of the platform with the load (power chair/scooter) on.

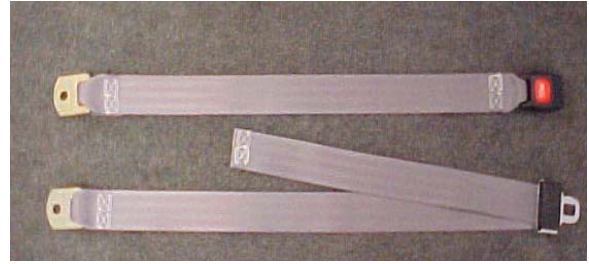
WARNING: THE ALIGNMENT PINS SECURE THE PLATFORM, AND TOGETHER WITH THE STRAPS, SECURE THE POWER CHAIR/SCOOTER TO THE TROLLEY ASSEMBLY DURING TRANSPORT. AN UNSECURED POWER CHAIR/SCOOTER CAN CAUSE SERIOUS INJURIES.

STEP 12: INSTALLING THE STRAPS FOR THE CUSTOMER'S POWER CHAIR/SCOOTER

In general, Power Chairs will use straps mounted near the center of the platform, and for Scooters the straps will be mounted off to one side.

- Locate the straps on the platform where they will be able to buckle across the seat of the customer's power chair or scooter.

Buckle (above) Latch Plate & Adjustable Strap (below)



Note: It is strongly recommended that the buckle be attached to the side closest to the vehicle (van, minivan) so that the adjustable strap is easy to reach.



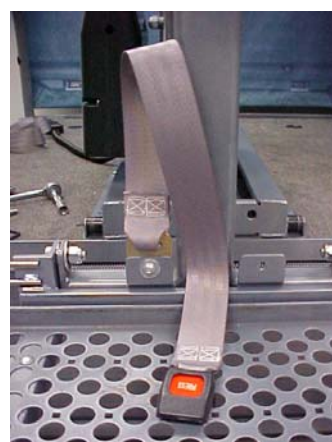
POWER CHAIR



SCOOTER

STEP 13a Installing Hold-down Straps in the Center Positions

- Installing the side near the trolley assembly. Use 5/16 – 18 x 1" Button Head Socket Screw, 5/16 – 18 nylon insert lock nut, and one 5/16 SAE flat washers.

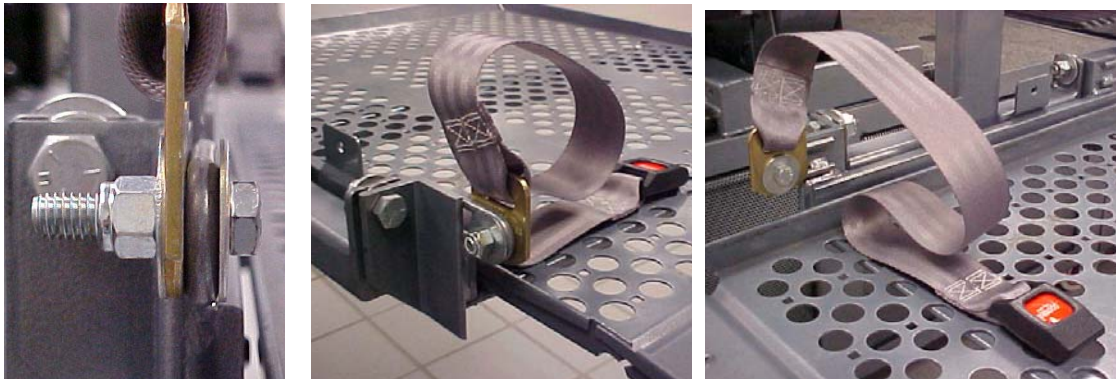


- Installing the side towards the outside of the vehicle. Use the 5/16 – 18 x 1.25” flat head screw, five 5/16 SAE flat washers (to space the Hold-down strap away from the deck), another 5/16 SAE flat washer and finally a 5/16 – 18 nylon insert lock nut to secure the metal plate of the buckle side of the Hold-down strap as shown.



STEP 13b Installing Hold-down Straps off to the side in the Loop Positions

- Installing the loop, on the side near the trolley assembly. Use 3/8 – 16 x 1.5” Hex Cap Screw, 3/8 – 16 nylon insert lock nut, and two 3/8 x 1.25 fender washers, as shown below:



- Installing the side towards the outside of the vehicle. Use the 3/8 – 16 x 1.5” Hex cap screw, two 3/8 SAE flat washers, two 3/8 x 1.25 fender washers, and a 3/8 – 16 nylon insert lock nut to secure the metal plate of the latch plate to the loop as shown below: The fender washers must contact the loop.

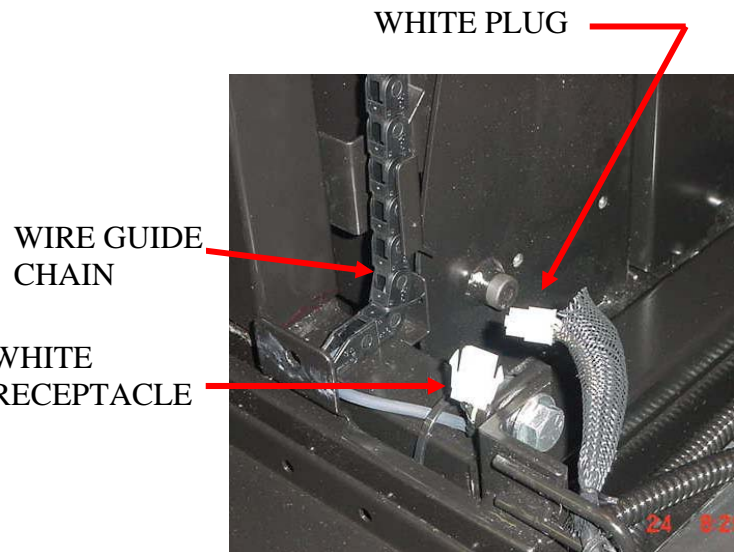


STEP 14: OPTIONAL: DOCK-N-LOCK INSTALLATION

The Dock-N-Lock system is an optional Electronic-docking device designed to eliminate straps and other manual locking devices. The unit will come pre-wired. Some simple wire routing, connector mating, and strain relief's will complete the installation.

Installation of Dock-N-Lock unit on the TRACKER XT Platform:

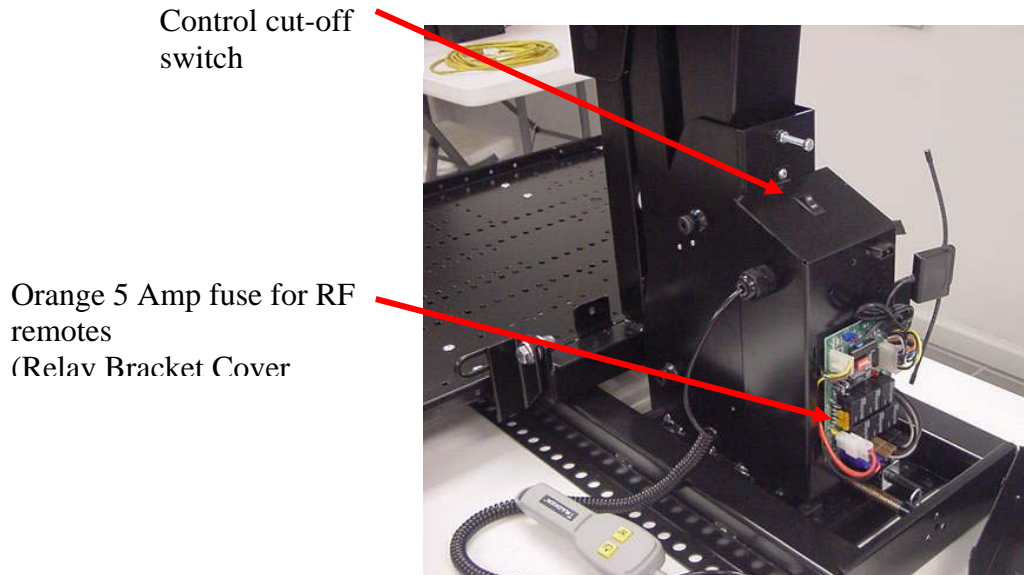
1. The Dock-N-Lock unit comes installed on the platform.
IMPORTANT The unit may need height and distance adjustments for proper locking to occur. See mounting instruction for the specific scooter or power chair.



2. Connect the wire white plug from the Dock-N-Lock unit to the white receptacle coming out of the wire guide chain.
3. Secure the wires with cable ties and strain relief to prevent wires from damage and getting in the way
4. Install the Docking Plow onto the Power Chair/Scooter. Refer to separate instructions supplied with the Plow Kit Hardware.

FUSE FOR RF REMOTE CONTROL CIRCUIT

If the Remote Control is not working, check the fuse to see if it is blown. Replace the fuse if necessary. If the Remote Control unit still does not function, there may be another problem with the TRACKER XT - check the operation of the TRACKER XT using the hand held pendant.



TRAINING THE END-USER

- Review all of the SAFETY ISSUES.
- Explain how the Lift is wired.
- Explain the location and operation of the self-resetting fuse in the electrical circuit.
- Review the operation of the Lift as described in the USER'S MANUAL.

MAINTAINING THE LIFT

- a) CLEANING: **KEEP THE TRACKS CLEAR OF FOREIGN OBJECTS** Even small stones/gravel inside the tracks can interfere or stop the operation of your TRACKER XT
- b) Inspect the hold down straps for wear or fraying periodically.
- c) Inspect the side-to-side clearances and over the bumper & threshold clearances periodically.
- d) MONTHLY: Check all mounting hardware for tightness and signs of wear due to vehicle aging, rust, etc.
- e) TWICE A YEAR: Lubricate the lead screw with a small amount of wheel bearing grease. Lubricate all bearing points and moving parts using wheel-bearing grease.

TROUBLESHOOTING CHART

SYMPTOM	POSSIBLE CAUSE	SOLUTION
Lift does not work	Control cut-off switch is off.	Turn the switch on. "RED IS ON", see page 4
	Power cord is unplugged from Lift.	Plug the power cord into the vehicles wire harness, see page 6
	Vehicle battery not connected or is dead.	Check the battery connections; charge the battery.
	Malfunctioning Pendant	Try the remotes
	Trolley not moving on tracks Or noisy travel.	Foreign objects in tracks; clean out the tracks
	RF remote batteries weak/"dead"	Try the hand held pendant Replace batteries in RF remote unit.
	RF fuse blown	Inspect RF fuse, replace if needed. (Page 20)
Lift runs slowly	Weak vehicle battery.	Charge vehicle's battery / run vehicle to charge it.
	Load is too heavy.	Only lift power chairs under 350 pounds. Remove any heavy personal items stored on Power Chair/Scooter.
Power chair too loose or too tight on the Lift	Improperly adjusted Hold-down strap	Re-adjust the Hold-down strap.
Loud mechanical clicking sound after the lifting is complete	Actuator (electric cylinder) is clutching out	See if problem occurs without Power Chair/Scooter on the platform. Adjust the contact screw on "boom mounted limit switch" (Step 10, page 16)
Platform not clearing bumper or rubbing on vehicle	Alignment hardware not tightened or out of adjustment..	Inspect and adjust the Lift alignment. (See page 12-16, step 5 – 12)

LIFETIME WARRANTY

Limited, Non-prorated, Non-Transferable

For Freedom Lift Mobility Lift Products

What and Who is Covered and for How Long

FREEDOM LIFT warrants to the original owner/retail purchaser that its mobility lift products, parts and accessories (excluding electrical components*), will be free from manufacturing defects in material and workmanship when subject to normal and proper use. Should any such defect occur during the lifetime of the original purchaser (and as long as the original purchaser still retains ownership of the product), FREEDOM LIFT will repair or replace, at its option, the defective product. FREEDOM LIFT also reserves the right to refund the amount paid by the original owner for the product. This warranty does not cover labor or other services.

In the event of repair or replacement under the terms of this warranty, the original warranty shall apply to the replacement or repaired part or product and will extend for the balance of the warranty period in effect at the time the product proved defective.

***All electrical components are warranted for two years, actuators are warranted for one year and motors are warranted for a period of five years, providing they have been installed and maintained in accordance with Freedom Lift's installation and maintenance guidelines.**

Limitations

This warranty does not provide protection against any failure, defect or damage caused by situations and events beyond normal proper use, operation, and exposure conditions, including but not limited to:

- Misuse, abuse, neglect or improper handling or storage;
- Improper installation or installation not in strict adherence to FREEDOM LIFT's written instructions;
- Use of accessories which do not properly receive and/or secure FREEDOM LIFT's products;
- Impact of foreign objects, fire, earthquake, flood, lightning, hurricane, tornado or other casualty or act of God;
- Defects in, failure of or damage to vehicle or structure on which FREEDOM LIFT's products have been installed.
- Any other cause not involving manufacturing defects in the material supplied by FREEDOM LIFT.
- This Limited Lifetime Warranty is applicable only to Freedom Lift Mobility Lift Products sold on or after May 5, 2003.

FREEDOM LIFT reserves the right to discontinue or modify any of its products without notice, and shall not be liable as a result of such discontinuance or modification, nor shall FREEDOM LIFT be liable in the event the replacement material may vary in any way in comparison to the original product. If FREEDOM LIFT replaces any products or parts under this warranty, it may substitute products designated by FREEDOM LIFT to be of comparable quality or price range in the event the product initially installed has been discontinued or modified.

Other Conditions/Disclaimer

THIS WARRANTY REPLACES ALL OTHER ORAL OR WRITTEN WARRANTIES, LIABILITIES OR OBLIGATIONS OF FREEDOM LIFT. PERTINENT STATE LAW SHALL CONTROL FOR WHAT PERIOD OF TIME FOLLOWING THE SALE AN OWNER/ RETAIL PURCHASER MAY SEEK A REMEDY UNDER THE IMPLIED WARRANTY OF MERCHANTABILITY OR OF FITNESS FOR A PARTICULAR PURPOSE. IN NO EVENT SHALL FREEDOM LIFT BE LIABLE FOR CONSEQUENTIAL OR INCIDENTAL DAMAGES OF ANY KIND, INCLUDING ANY DAMAGE TO THE VEHICLE OR STRUCTURE, ITS CONTENTS OR ANY PERSONS THEREIN, RESULTING FROM THE BREACH OF THIS WARRANTY. FREEDOM LIFT DOES NOT AUTHORIZE ITS FIELD REPRESENTATIVES, DISTRIBUTORS OR DEALERS TO MAKE ANY CHANGE OR MODIFICATION TO THIS WARRANTY. SOME STATES DO NOT ALLOW LIMITATIONS ON, OR THE EXCLUSION OF, INCIDENTAL OR CONSEQUENTIAL DAMAGES, SO THE ABOVE EXCLUSIONS MAY NOT APPLY TO YOU.

****This warranty gives you specific legal rights, and you may also have other rights, which may vary from state to state.***

What the Customer Must Do

The owner/retail purchaser must promptly notify FREEDOM LIFT in writing of any manufacturing defect promptly following its discovery, and provide proof of the date of purchase. All notifications should be sent to: FREEDOM LIFT North second Street, Green Lane, PA 18054, Attn: Warranty Service Department. The owner may be required to send the defective product to FREEDOM LIFT for analysis. FREEDOM LIFT will then investigate the claim and examine the product claimed to be defective. If a defect covered by this warranty is confirmed, FREEDOM LIFT within a reasonable amount of time after the inspection will repair or replace the product or refund the amount paid by the original owner for the product. FREEDOM LIFT CORP will pay for shipping back to the purchaser within the continental United States and Canada if a defect in material or workmanship is discovered. Return freight and repair charges will be the responsibility of the purchaser if the problem is not covered by the warranty.

Warranty registration Information

Register your investment. Register your product warranty by returning the warranty registration card to: FREEDOM LIFT CORP North second Street, Green Lane, PA 18054, Attn: Warranty Service Department or on our website at www.freedom-lift.com. You will then receive a numbered registration confirmation by return mail or e-mail.

****Failure to register this warranty shall not void the warranty or any of its terms.***

This warranty is effective 11/1/03. It replaces all prior warranties.